



Technical-sheets

Wardrobes

Opening sense availables for wardrobes with 1 single door

NON-FLUSH-TO-WALL side

Interior side (e.g. laundry room, pantry, coat rack, shoe rack, wardrobe)

OPEN DOORS

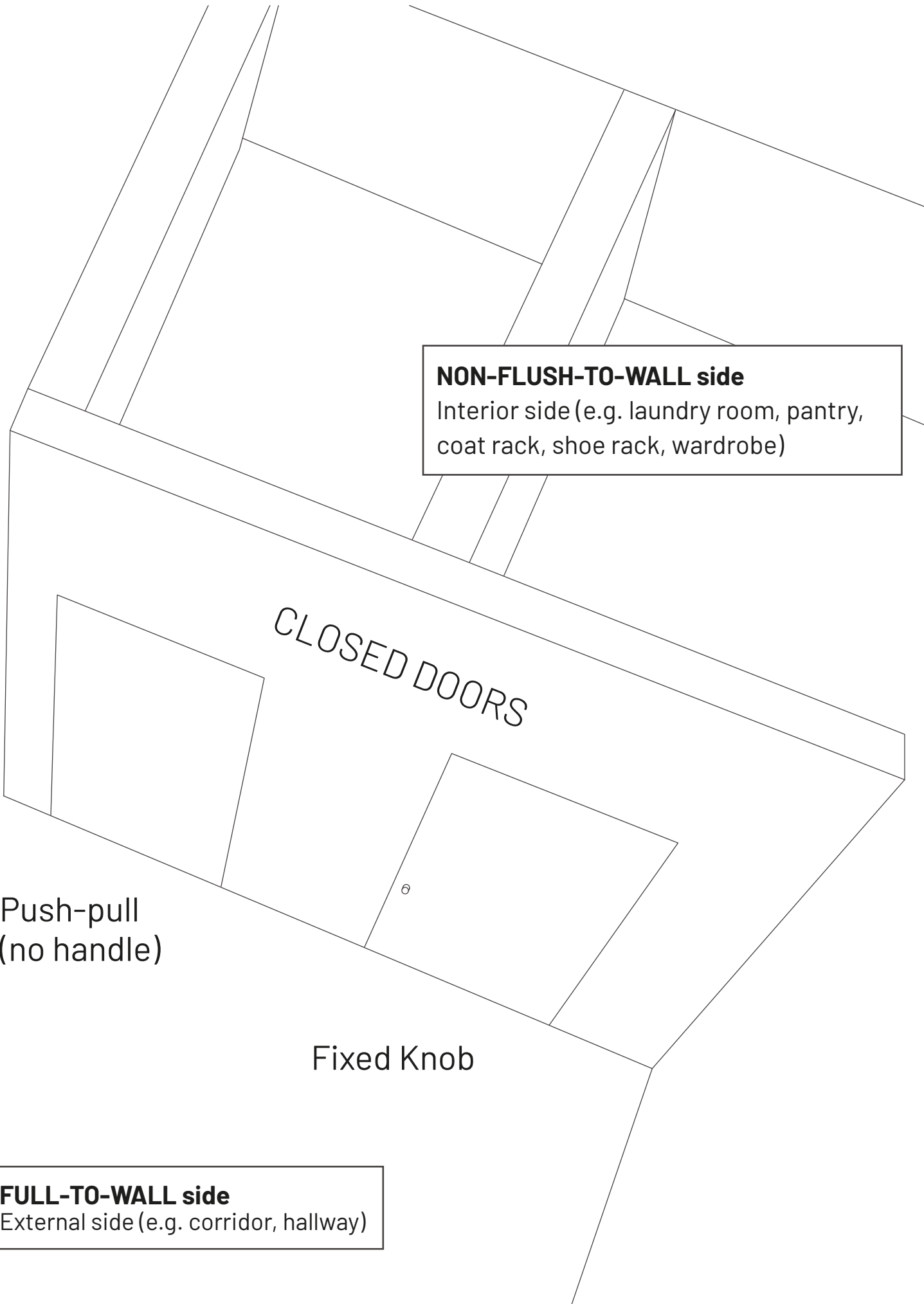
PULL LEFT
Left hand outswing

PULL RIGHT
right hand outswing

FULL-TO-WALL side

External side (e.g. corridor, hallway)

Visual example for closed doors



NON-FLUSH-TO-WALL side
Interior side (e.g. laundry room, pantry, coat rack, shoe rack, wardrobe)

CLOSED DOORS

Push-pull
(no handle)

Fixed Knob

FULL-TO-WALL side
External side (e.g. corridor, hallway)

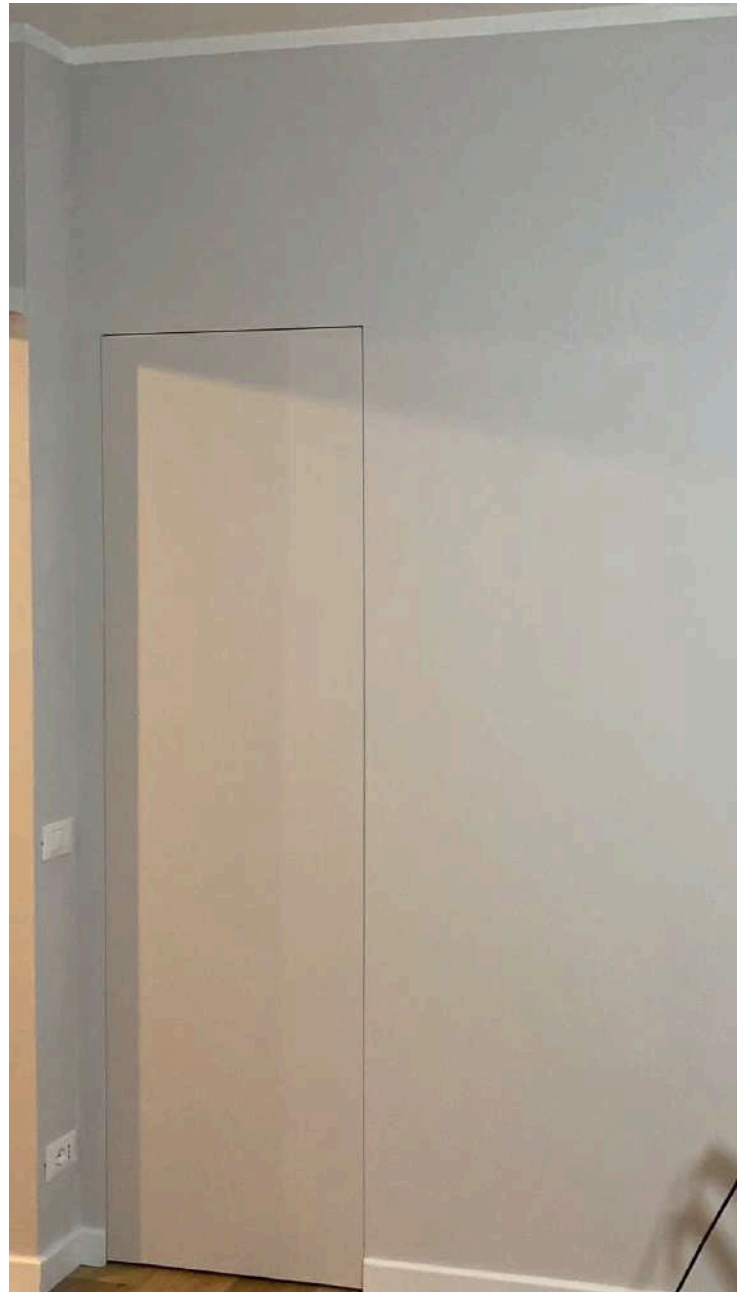
Out from our Portfolio:

1-door-wardrobe with push-pull opening mechanism (no visible handle)

Before the final painting

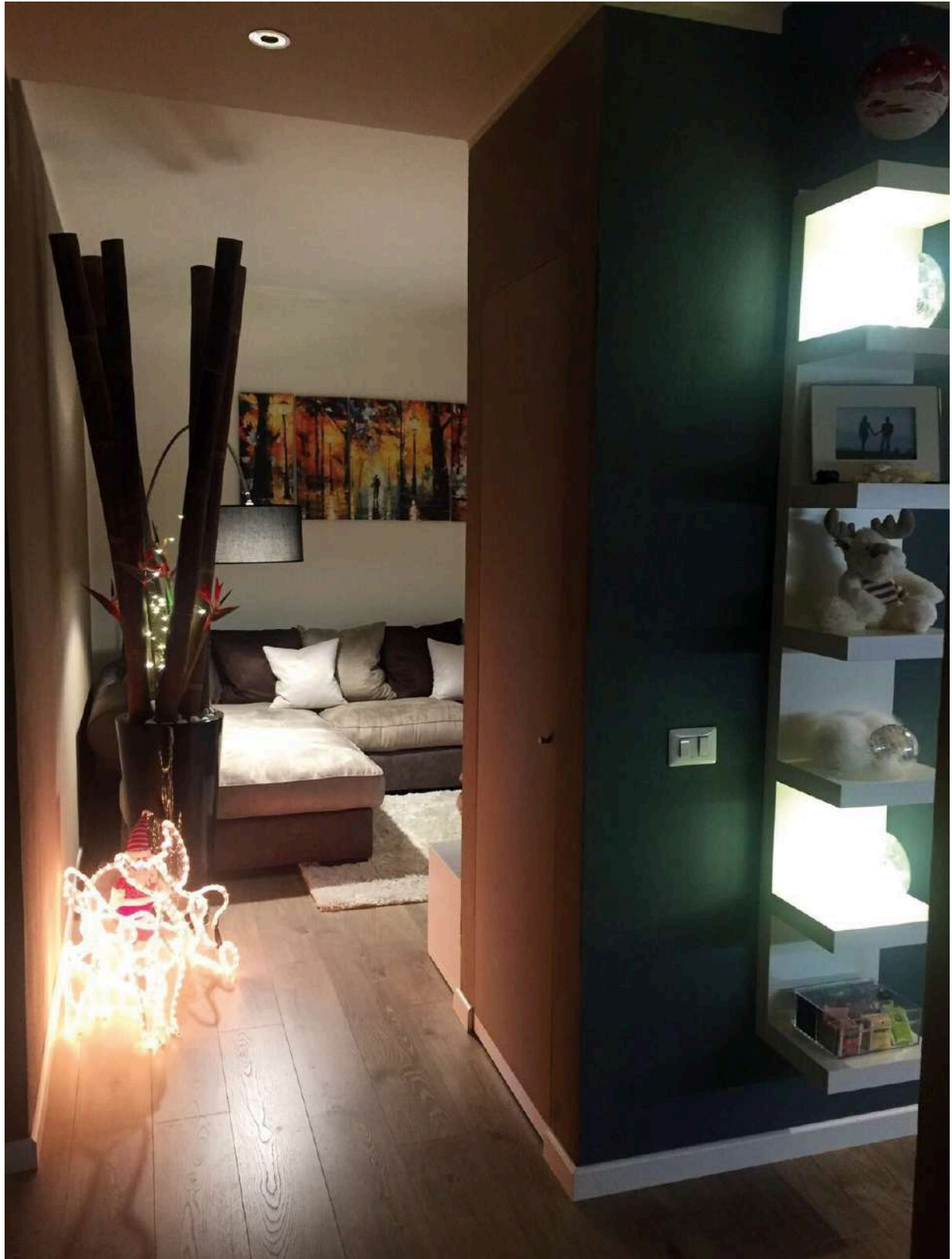


After the final painting

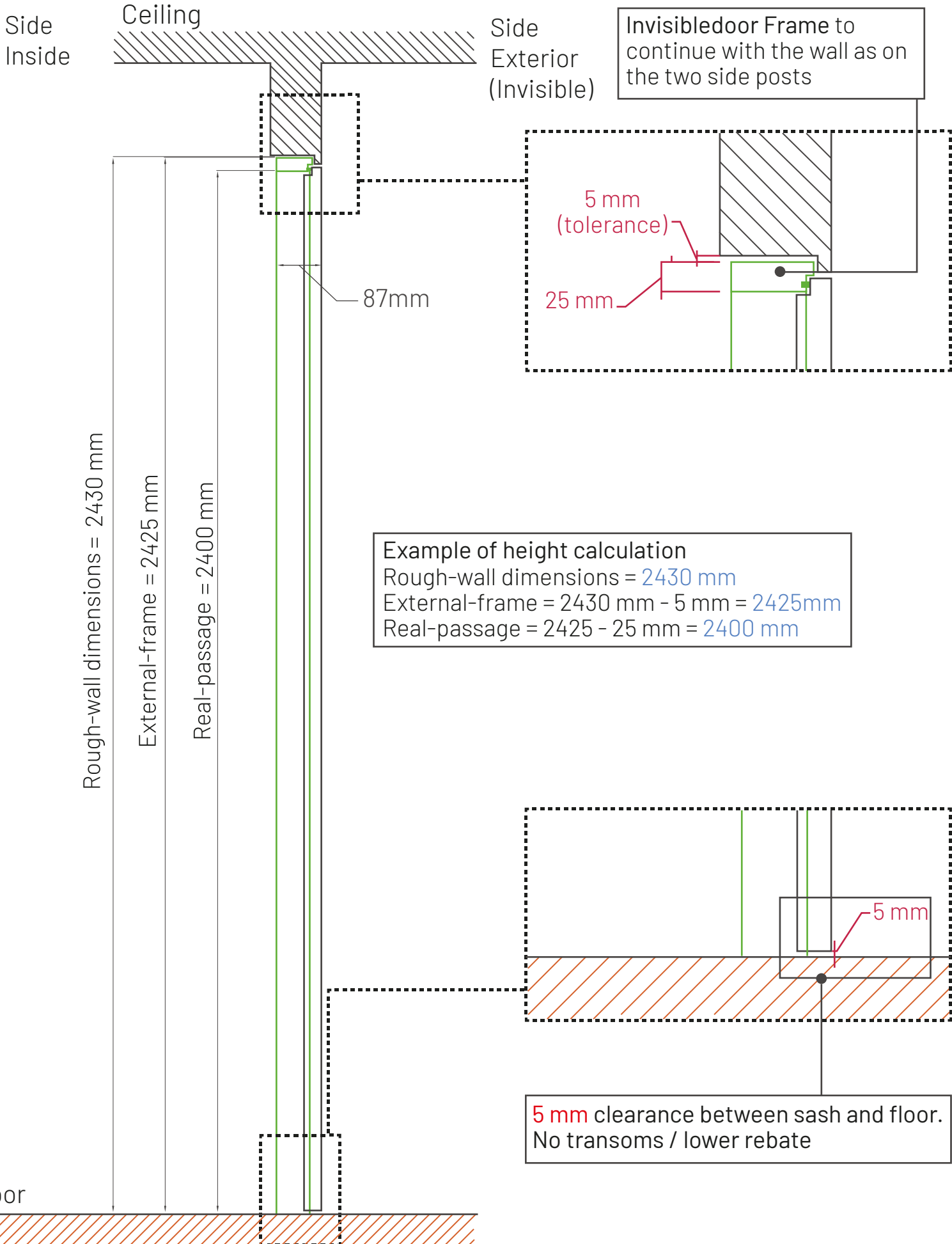


Out from our Portfolio:

1-door-wardrobe with minimal fixed knob (satin chrome finish)

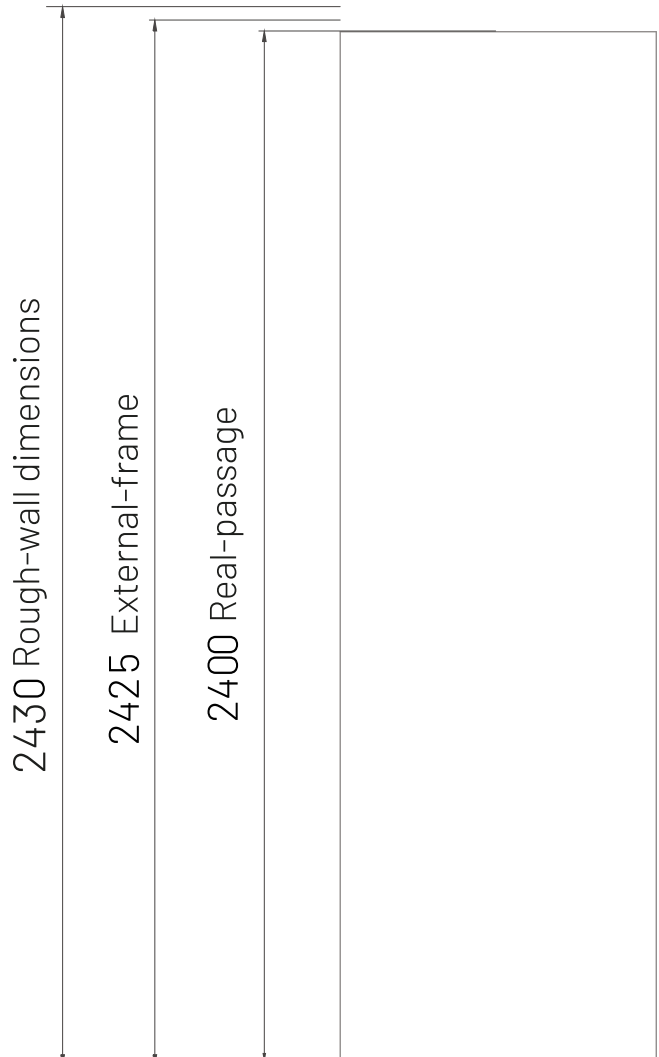
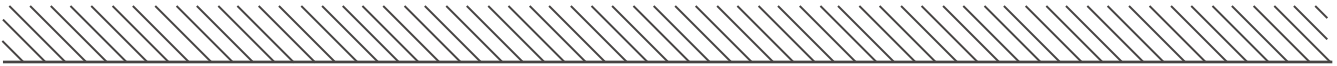


EXAMPLE of side section

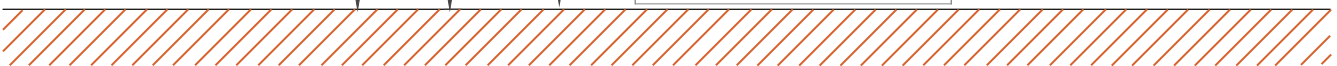


EXAMPLE of front view and plan view

Ceiling



Finished floor

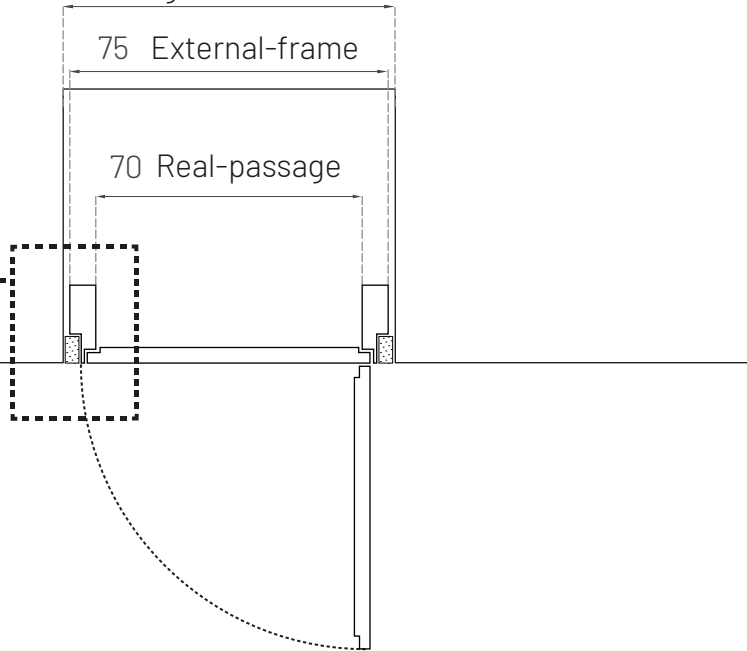


Top view (plan)
Right hand outswing

76 Rough-wall dimensions

75 External-frame

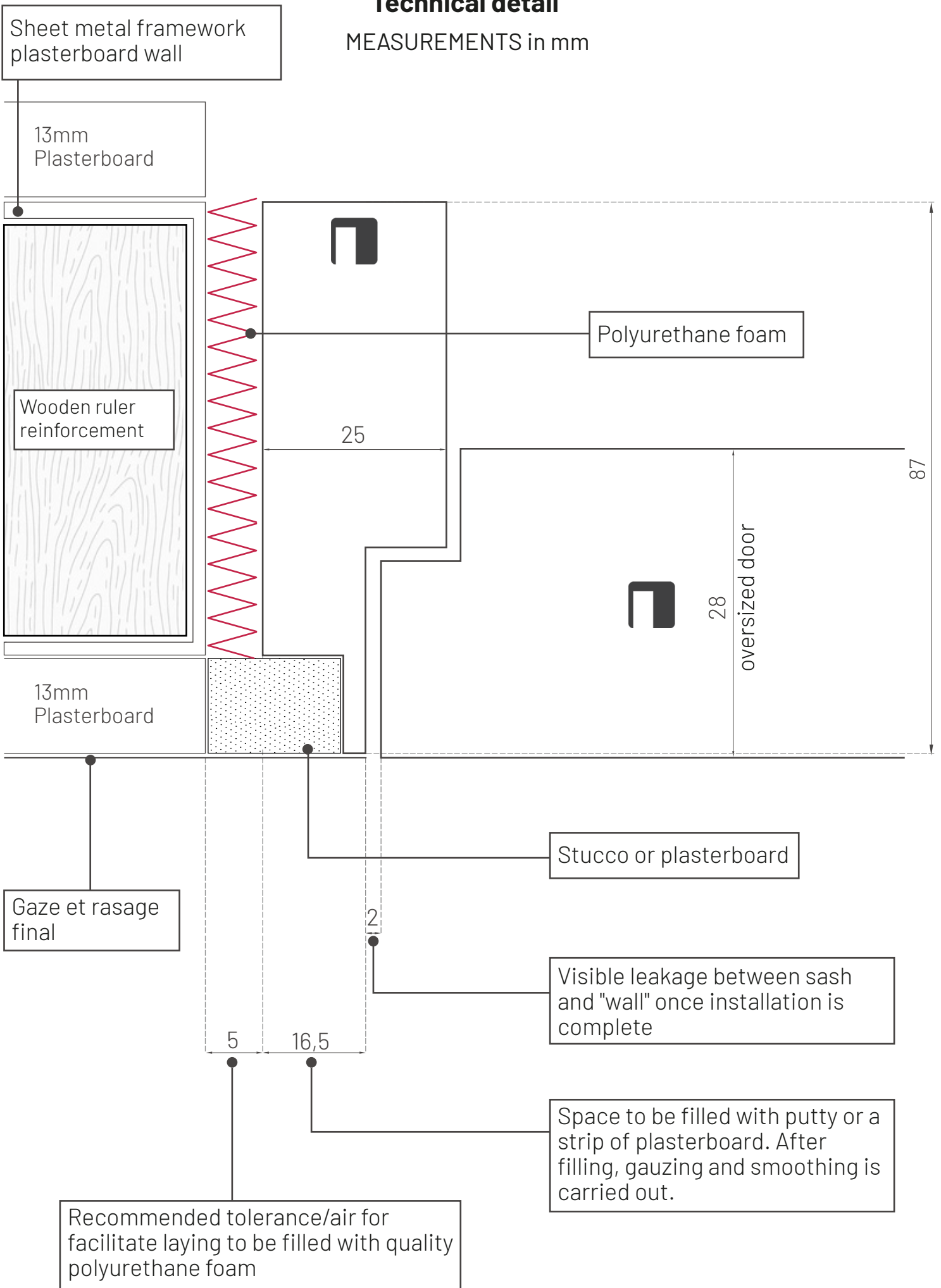
70 Real-passage



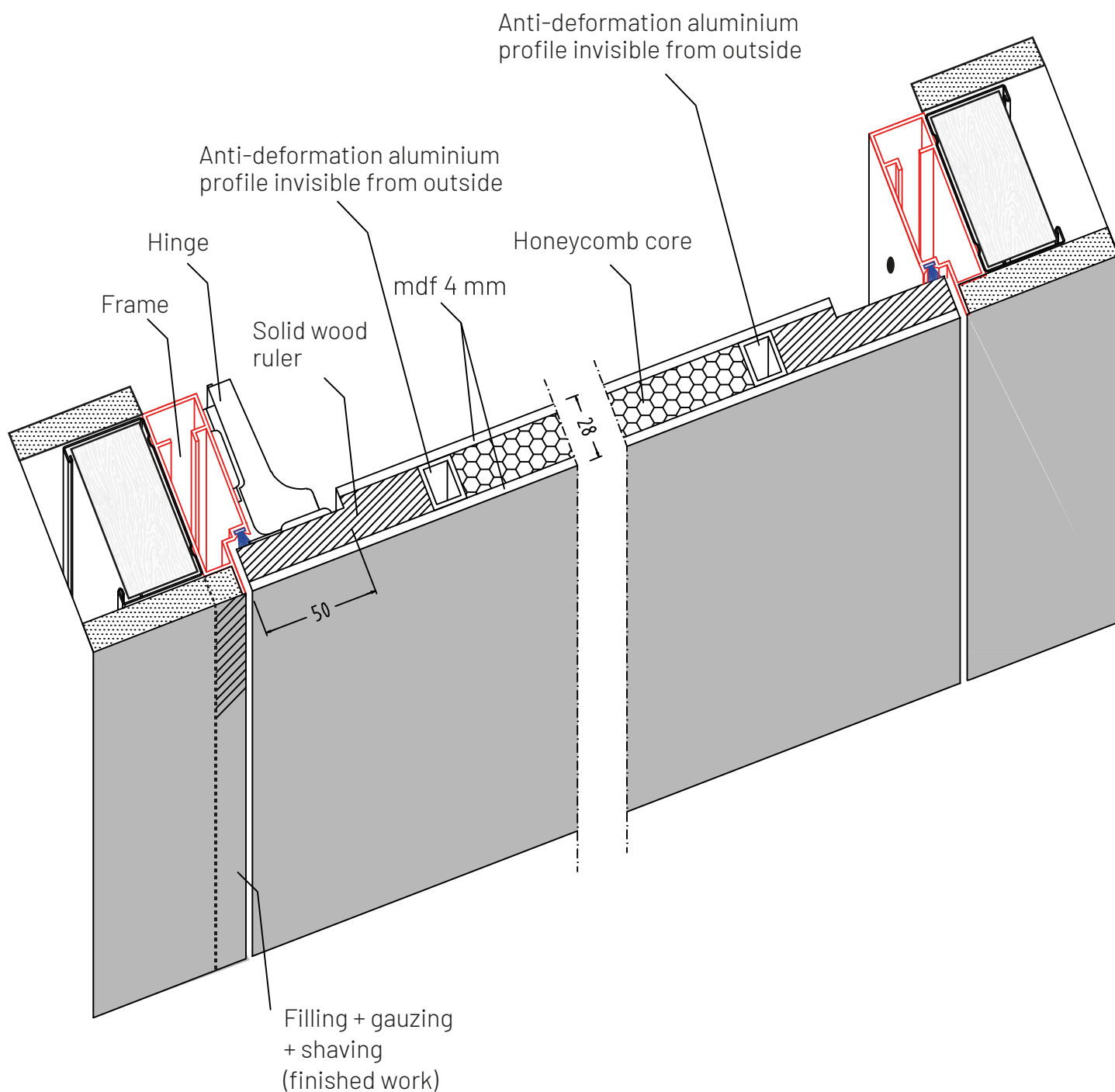
Technical detail in the next tab

Technical detail

MEASUREMENTS in mm



Wardrobe door composition 28 mm



Please Mind these notes

Our doors will never have 'laminates' and are always fully edged and boarded (such as skateboards)

Out from our Portfolio:

Hinged door with push opening, with recessed handle

1-door-wardrobes with pull left opening, with recessed extractable knob

